



**PANCHAYAT DEVELOPMENT INDEX
APPLICABILITY – II (Cont..)**

**PRESENTED BY
ER. HILLOL DAS,
FACULTY (COMPUTER)
DIRECTORATE OF PANCHAYATS**

Architect of Local Indicator Framework



**Local
Indicator
Framework**

**Common
Indicators**

**Specific/
Optional
Indicators**

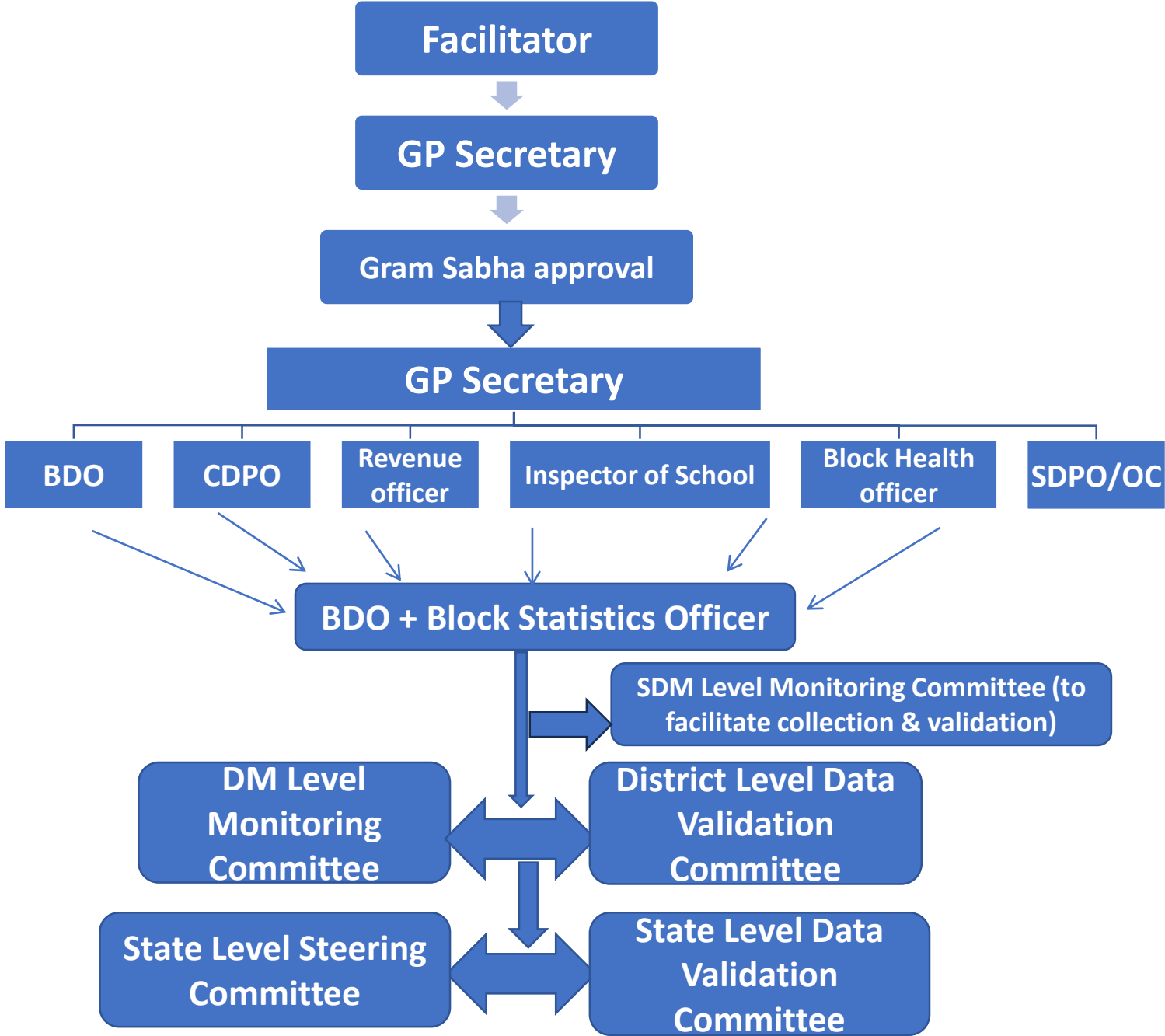
**Total
Unique
Indicators**

**Unique
Data Points**

**Total Data
Points used**



Data
Validation
Process Flow



Total Number of Data Collection Format (DCF)

- Number of Departments selected for PDI = D
- Number of GP/VC = P
- Number of Total DCF = $P \times D$



PANCHAYAT
DEVELOPMENT INDEX



P O R T A L

पंचायत विकास सूचकांक पोर्टल

Panchayat Development Index (PDI) Portal

Facilitating creation of a digital platform & ecosystem for

focused implementation of interventions to achieve SDG 2030 agenda in rural India

- <https://pdi.gov.in/>

Committees formed at various level

Steering Committee at State Level

Sl. No.	Designation	Role
1	The Chief Secretary	Chairman
2	The PCCF	Member
3	The Principal Secretary, Revenue Department	Member
4	The Principal Secretary, Fishery Department	Member
5	The Secretary, PWD (WR) Department	Member
6	The Secretary, SW & SE Department	Member
7	The Secretary, Agriculture & Farmers Welfare Department	Member
8	The Secretary PWD (DWS) Department	Member
9	The Secretary, Health & Family Welfare Department	Member
10	The Secretary, RD (Panchayat) Department	Member
11	The Secretary, Home Department	Member
12	The Secretary, ARDD	Member

Committees formed at various level

Steering Committee at State Level

Sl. No.	Designation	Role
13	The Secretary, Horticulture Department	Member
14	The Secretary, Power Department	Member
15	The Secretary, Industries and Commerce Department	Member
16	The Special Secretary, Economics and Statistics Department	Member
17	The Special Secretary, Planning (P&C) Department	Member
18	The Special Secretary, Food, Civil Supplies and Consumer Affairs Department	Member
19	The State Informatics Officer, NIC Tripura	Member
20	The Chief Manager, SLBC	Member

Committees formed at various level

District Level Monitoring Committee

Sl. No.	Designation	Role
1	The Chief Executive Officer (DM & Collector), Zilla Parishad	Chairman
2	The Superintendent of Police	Member
3	The District Forest Officer, Forest	Member
4	The Addl.District Mission Manager (ADM & Collector), TRLM	Member
5	The District Panchayat Officer (DPO)	Member Secretary
6	The Executive Engineer, R.D. Department	Member
7	The Executive Engineer, P.W (R&B) Department	Member
8	The Executive Engineer, P.W (WR) Department	Member
9	The Executive Engineer, P.W (DWS) Department	Member
10	The Chief Medical Officer, Health	Member
11	The District Education Officer, Education	Member

Committees formed at various level

District Level Monitoring Committee

Sl. No.	Designation	Role
12	The District Welfare Officer, Welfare Department	Member
13	The DGM, TSECL	Member
14	The District Labour Officer, Labour Department	Member
15	The District Inspector of Social Education	Member
16	The District Informatics Officer, NIC	Member
17	The Joint Director/Dy. Director, Planning and Coordination Department	Member
18	The District Statistical Officer, Statistics Department	Member
19	The Dy. Director, Agriculture	Member
20	The Dy. Director, Horticulture	Member
21	The Dy. Director, Fishery	Member
22	The Dy. Director, ARDD	Member
23	The Branch Officer, Revenue, District Administration	Member
24	The Lead District Manager, DLBC	Member

Committees formed at various level

Sub-Divisional Level Monitoring Committee

Sl. No.	Designation	Role
1	The Sub-Divisional Magistrate	Chairman
2	The Block Development Officer	Member Secretary
3	The Superintending Engineer, R.D. Department	Member
4	The Superintending Engineer, P.W (R&B) Department	Member
5	The Superintending Engineer, P.W (WR) Department	Member
6	The Superintending Engineer, P.W.D (DWS)	Member
7	The Sub-Divisional Medical Officer, Health	Member
8	The CDPO, SW&SE	Member
9	The Branch Officer, Revenue, Sub-Divisional Administration	Member
10	The Senior Manager, TSECL	Member
11	The Asst. Director/Superintendent, Agriculture	Member
12	The Asst. Director/Superintendent, Horticulture	Member

Committees formed at various level

Sub-Divisional Level Monitoring Committee

Sl. No.	Designation	Role
13	The Asst. Director/Superintendent, Fishery	Member
14	The Asst. Director/Superintendent, ARDD	Member
15	The Child Development Project Officer, Social Welfare and Social Education	Member
16	The Inspector of School, Education	Member
17	The Panchayat Officer/Panchayat Extension Officer	Member
18	The Labour Inspector, Labour Department	Member
19	The Branch Officer, Revenue, Sub-Divisional Administration	Member

Committees formed at various level

Block Level Monitoring Committee

Sl. No.	Designation	Role
1	The Executive Officer(BDO), Panchayat Samiti/BAC	Chairman
2	The Block Mission Manager, TRLM	Member
3	The Sub-Divisional Police Officer, Home	Member
4	The Sub-Divisional Forest Officer, Forest	Member
5	The Sub-Divisional Medical Officer, Health	Member
6	The Addl. Block Development Officer	Member Secretary
7	The Asstt. Engineer, R.D. Department	Member
8	The Asstt. Engineer, P.W (R&B) Department	Member
9	The Asstt. Engineer, P.W (WR) Department	Member
10	The Asstt. Engineer, P.W (DWS) Department	Member
11	The Sub-Divisional Welfare Officer, Welfare Department	Member
12	The Branch Officer, Revenue, Sub-Divisional Administration	Member

Committees formed at various level

Block Level Monitoring Committee

Sl. No.	Designation	Role
13	The Senior Manager, TSECL	Member
14	The Asst. Director/Superintendent, Agriculture	Member
15	The Asst. Director/Superintendent, Horticulture	Member
16	The Asst. Director/Superintendent, Fishery	Member
17	The Asst. Director/Superintendent, ARDD	Member
18	The Child Development Project Officer, Social Welfare and Social Education	Member
19	The Inspector of School, Education	Member
20	The Panchayat Officer/Panchayat Extension Officer	Member
21	The Labour Inspector, Labour Department	Member

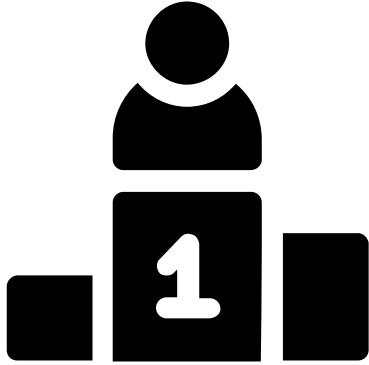
Role of Line Departments

- **Department wise Nodal Officer to be assigned at the State/District /Block Level**
- **Necessary instruction to be given at different levels for extending support by providing GP/VC wise data to the concerned facilitator.**
- **If GP/VC wise data not available then it will be the responsibility of the concerned line department official to segregate the same for GP/VC wise.**
- **District head of the line departments will be responsible for monitoring the entire process of data collection.**
- **Data to be checked for maintaining the authenticity before handed over to the facilitators.**

Requirement of Special Interventions

- **GRS to be assigned as Facilitator for GP/VC who shall be responsible for data collection**
- **RPM/In-Charge Panchayat Secretary shall be responsible for checking the accuracy of the collected data before placing it to the Gram Sabha for validation.**
- **Periodical meeting to be conducted at various levels e.g. State, District, Sub-Division and Block level.**
- **PDI Cell may be formed at District, Sub-Division and Block Head Quarter which shall be responsible for entire process of PDI.**
- **Workshop to be conducted at various level.**

Grading on PDI Score



A+

Achiever (90)

प्राप्तकर्ता (90)

A

Front Runner
(75-90)

अग्रणी (90)

B

Performer
(60-75)

प्रदर्शनकर्ता (90)

C

Aspirant
(40-60)

आकांक्षी (40-
60)

D

Beginner
(0-40)

शुरुआती (0-40)



All 8 District PDI Score

District Details	No. of GPs	Overall PDI Score	T1 - Poverty Free and Enhanced Livelihoods Village	T2 - Healthy Village	T3 - Child Friendly Village	T4 - Water Sufficient Village	T5 - Clean and Green Village	T6 - Self-sufficient Infrastructure in Village	T7 - Socially Just and Socially Secured Village	T8 - Village with Good Governance	T9 - Women Friendly Village
District - Unakoti State - Tripura	91	68.94 B Performer	74.07 B Performer	82.87 A Front Runner	75.33 A Front Runner	65.44 B Performer	59.22 C Aspirant	60.08 B Performer	71.57 B Performer	69.67 B Performer	67.27 B Performer
District - West Tripura State - Tripura	170	66.8 B Performer	69.85 B Performer	85.13 A Front Runner	75.75 A Front Runner	59.92 C Aspirant	61.01 B Performer	55.35 C Aspirant	69.43 B Performer	67.94 B Performer	63.19 B Performer
District - South Tripura State - Tripura	169	66.66 B Performer	72.26 B Performer	84.44 A Front Runner	73.54 B Performer	59.59 C Aspirant	58.29 C Aspirant	54.9 C Aspirant	68.58 B Performer	67.2 B Performer	67.79 B Performer
District - Sepahijala State - Tripura	169	66.22 B Performer	69.52 B Performer	84.78 A Front Runner	73.5 B Performer	60.17 B Performer	60.53 B Performer	55.68 C Aspirant	67.27 B Performer	65.94 B Performer	64.61 B Performer
District - Gomati State - Tripura	173	65.77 B Performer	69.55 B Performer	85.62 A Front Runner	72.7 B Performer	61.44 B Performer	58.37 C Aspirant	52.98 C Aspirant	66.75 B Performer	65.28 B Performer	66.25 B Performer
District - Khowai State - Tripura	124	64.79 B Performer	69.04 B Performer	82.88 A Front Runner	72.95 B Performer	57.88 C Aspirant	59.36 C Aspirant	52.45 C Aspirant	67.42 B Performer	64.69 B Performer	63.15 B Performer
District - North Tripura State - Tripura	129	64.26 B Performer	68.32 B Performer	82.52 A Front Runner	72.96 B Performer	57.37 C Aspirant	57.24 C Aspirant	50.85 C Aspirant	66.03 B Performer	65.67 B Performer	65.91 B Performer
District - Dhalai State - Tripura	151	63.21 B Performer	67.49 B Performer	80.78 A Front Runner	67.79 B Performer	57.88 C Aspirant	56.66 C Aspirant	48.54 C Aspirant	67.22 B Performer	64.93 B Performer	64.6 B Performer

Top 4 Blocks – PDI Score

Rank	Block Details	No. of GPs	Overall PDI Score	T1 - Poverty Free and Enhanced Livelihoods Village	T2 - Healthy Village	T3 - Child Friendly Village	T4 - Water Sufficient Village	T5 - Clean and Green Village	T6 - Self-sufficient Infrastructure in Village	T7 - Socially Just and Socially Secured Village	T8 - Village with Good Governance	T9 - Women Friendly Village
1	Block - Kumarghat District - Unakoti State - Tripura	34	75.48 A Front Runner	80.76 A Front Runner	83.6 A Front Runner	81.05 A Front Runner	77.55 A Front Runner	69.37 B Performer	65.29 B Performer	79.25 A Front Runner	74.16 B Performer	71 B Performer
2	Block - Padmabil District - Khowai State - Tripura	17	71.08 B Performer	74.61 B Performer	83.44 A Front Runner	77.53 A Front Runner	65.4 B Performer	64.73 B Performer	63.79 B Performer	74.03 B Performer	71.11 B Performer	68.17 B Performer
3	Block - Amarpur District - Gomati State - Tripura	28	70.1 B Performer	72.4 B Performer	84.63 A Front Runner	76.47 A Front Runner	66.37 B Performer	63.11 B Performer	66.05 B Performer	71.14 B Performer	67.62 B Performer	67.33 B Performer
4	Block - Rupaichari District - South Tripura State - Tripura	18	69.6 B Performer	75.45 A Front Runner	87.04 A Front Runner	73.32 B Performer	65.85 B Performer	64.93 B Performer	53.92 C Aspirant	72.24 B Performer	70.02 B Performer	69.19 B Performer

Top 3 GP/ VC – PDI Score

Rank	Gram Panchayat Details	Overall PDI Score	T1 - Poverty Free and Enhanced Livelihoods Village	T2 - Healthy Village	T3 - Child Friendly Village	T4 - Water Sufficient Village	T5 - Clean and Green Village	T6 - Self-sufficient Infrastructure in Village	T7 - Socially Just and Socially Secured Village	T8 - Village with Good Governance	T9 - Women Friendly Village
1	GP - Rupaichari-[254102] Block - Rupaichari District - South Tripura State - Tripura	80.67 A Front Runner	86.5 A Front Runner	95.47 A+ Achiever	80.04 A Front Runner	81.03 A Front Runner	84.26 A Front Runner	67.88 B Performer	77.56 A Front Runner	76.65 A Front Runner	79.41 A Front Runner
2	GP - Fatikroy-[104029] Block - Kumarghat District - Unakoti State - Tripura	79.19 A Front Runner	83.19 A Front Runner	94.02 A+ Achiever	86.07 A Front Runner	81.71 A Front Runner	72.3 B Performer	70.03 B Performer	80.25 A Front Runner	77.37 A Front Runner	70.83 B Performer
3	GP - Bampur-[104072] Block - Amarpur District - Gomati	78.94 A Front Runner	83.99 A Front Runner	99.4 A+ Achiever	77.3 A Front Runner	75.72 A Front Runner	77.54 A Front Runner	70.66 B Performer	81.33 A Front Runner	77.08 A Front Runner	70.96 B Performer

Auto – Ported PDI Data from 8 different portals

uDISE+ Portal

eGramSwaraj Portal

JJM dashboard Portal

PMAY Portal

NREGA Portal

SBM-G Portal

Mission Antyodaya Portal

NSAP Portal



How will we collect the data for the indicators?



- 1. Some data is already available within our Panchayat.**
- 2. For some data, assistance from other departments will be needed.**
- 3. All indicator data must be comprehensively recorded in a register in each Gram Panchayat.**
- 4. After recording the indicator-based data, we will be able to identify the areas that need our attention.**
- 5. It will be observed that in most cases, improving the situation doesn't require much expenditure; only problem-based initiatives are needed.**



Probable challenges in data collection?



- 1. Many departments might say they don't have the prepared data.**
- 2. A meeting should be held at the Panchayat with employees from all the departments from which data needs to be collected.**
- 3. The specific data required from each department should be identified, and the department's employees should be given 45 days to provide the information.**
- 4. After receiving the data, the Panchayat should review it to ensure its accuracy, and if it is correct, it should be recorded in the register.**
- 5. If the Panchayat has doubts about the data, the concerned department's employee should be asked to verify and provide the information again.**

PANCHAYAT DEVELOPMENT INDEX COMMITTEE REPORT - 2023

LOCAL INDICATOR FRAMEWORK

9
Themes

144
Targets

577
Indicators

688
Data Points



LOCALISATION
OF
SUSTAINABLE
DEVELOPMENT

GOALS



आभार / शुक्रिया / धन्यवाद

THANK YOU